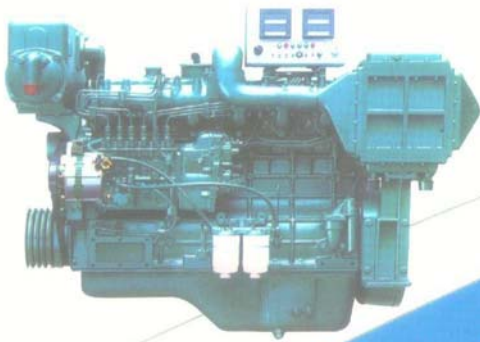
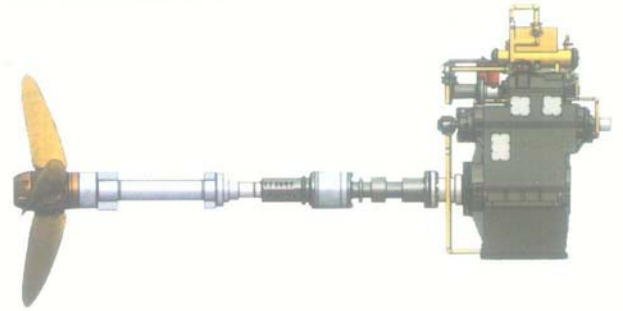
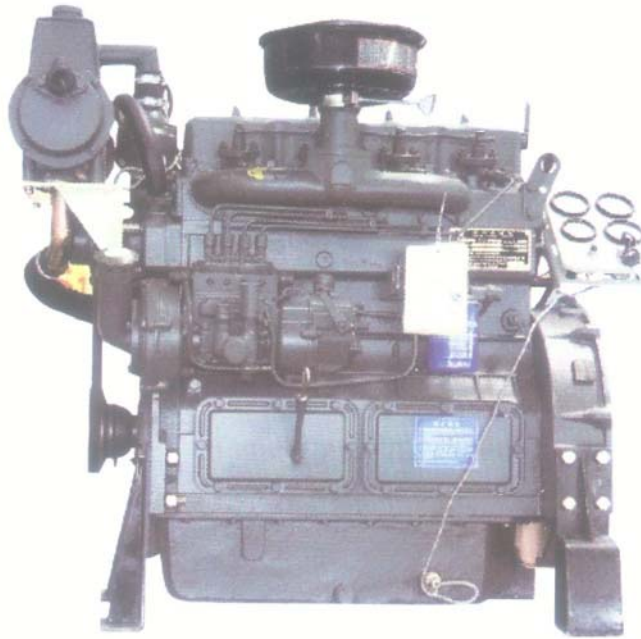


船用发动机
船用齿轮箱及船用配套件

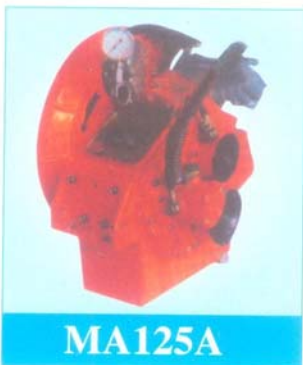
Marine Engine
Marine Gearbox
Marine Fittings



495 Series



Engine Model	Rated Power(KW)	Rated Speed (r/min)	Fuel Consumption (g/kw*h)	No of Cylinders	Bore* Stroke(mm)	Aspiration	Dry Weight(kg)	Dimension (mm)
495C	32	2000	≤240	4	95×115	N.A.	380	925×595×880
495C1	32	2000	≤241	4	95×115	N.A.	380	925×595×880
495C3	32	2000	≤242	4	95×115	N.A.	380	925×595×880
495C4	24	1500	≤243	4	95×115	N.A.	380	925×595×880
495C5	32	2000	≤244	4	95×115	N.A.	380	925×595×880
495C6	32	2000	≤245	4	95×115	N.A.	380	925×595×880
ZH495C	32	2000	≤246	4	95×115	N.A.	340	925×595×1055



MA125A MARINE GEARBOX MAX.82 HP at 3000RPM

Engine Speed: 1500~3000 RPM

Ratio	2.03	2.46	3.04	3.57	4.05
Rate(hp/rpm)	0.027		0.024	0.022	0.019

L×W×H: 291×454×485mm

Net Weight: 115kg

Bell housing:SAE 2,3,4

Flange: SAE 11 1/2, 10

Options/Comments: PTO device available; Mechanical remote operation

Centre distance: 125 mm

Engine: ISUZU UM02AB1; YAMAHA ME125 ...

MA125A

YC4D



YC4D Series Marine Engine

Product Model	Power/rotating speed (KW/rpm)		Inspiratory way	Output volume (L)	Net Weight (kg)	L*W*H (mm)	Flywheel specifications	flywheelcasing specifications	shipbuilding inspection certification	Performance
	fixed point	1hr								
YC4018CA	32/1500	35.2/1548	naturally aspirated	4.214	370	986*730*948	SAE11.5	SEA3	ZC, ZY, CCS	main engine or auxiliary engine
YC4108C	40/1500	44/1548	naturally aspirated	4.214	370	986*730*948	SAE11.5	SEA3	ZC, ZY, CCS	main engine or auxiliary engine
YC4108ZC	50/1500	55/1500	turbocharging	4.214	390	986*730*1254	SAE11.5	SEA3	ZC, ZY, CCS	main engine or auxiliary engine
YC4108ZC	55/1800	55/1858	turbocharging	4.214	390	986*730*1254	SAE11.5	SEA3	ZC, ZY, CCS	main engine or auxiliary engine



MA142A

MA142A MARINE GEARBOX MAX.102 HP at 2500RPM

Engine Speed: 1500~3000 RPM

Ratio	1.97	2.52	3.03	3.54	3.95	4.50	5.06
Rate(hp/rpm)	0.041			0.035	0.031	0.026	0.022

LxWxH: 308x520x540mm

Net Weight: 140kg

Bell housing:SAE 2,3,4

Flange: SAE 10,11.5

Options/Comments: PTO device available; Mechanical remote operation

Centre distance: 142 mm

Engine: CUMMINS 4B3.9;MWM D226-4 ...

Rated propeller thrust: 8.5 KN



40A

40A MARINE GEARBOX MAX.82 HP at 2000RPM

Engine Speed: 750~2000 RPM

Ratio	2.07	2.96	3.44
Rate(hp/rpm)	0.04		0.024

LxWxH: 490x670x620mm

Net Weight: 225kg

Bell housing:SAE 2,3

Flange: SAE 11.5

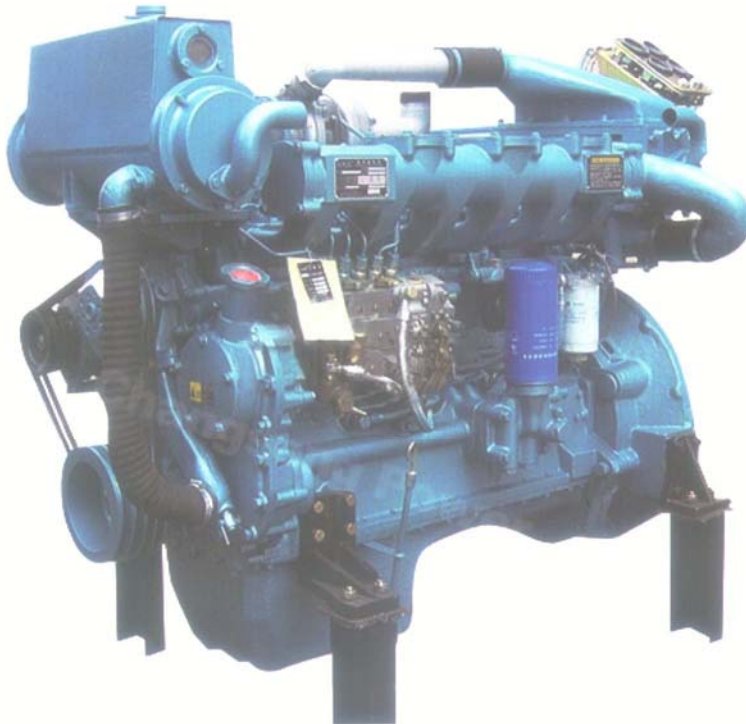
Options/Comments: Mechanical remote operation

Centre distance: 142 mm

Engine: YAMAHA ME400L; BAUDOUIN 4D106 ...

Rated propeller thrust: 8.8 KN

6105 Series



型号:R6105ZC
 标定功率:88KW
 最大功率:96.8KW
 标定转速:1500RPM
 主要用途:船用主机或船用发电



120C

120C MARINE GEARBOX MAX.340HP at 2500RPM

Engine Speed: 1500~2500 RPM

Ratio	1.48	1.94	2.45	2.96	3.35
Rate(hp/rpm)	0.136			0.122	0.109

L×W×H: 352×694×650mm
 Bell housing:SAE 1,2,3
 Options/Comments: Mechanical or Electrical remote operation
 Centre distance: 180 mm
 Engine: NT-855-M240; CAT3208TA ...

Net Weight: 225kg
 Flange: SAW14 ,11¹/₂



135A

135A MARINE GEARBOX MAX.272 HP at 2000RPM

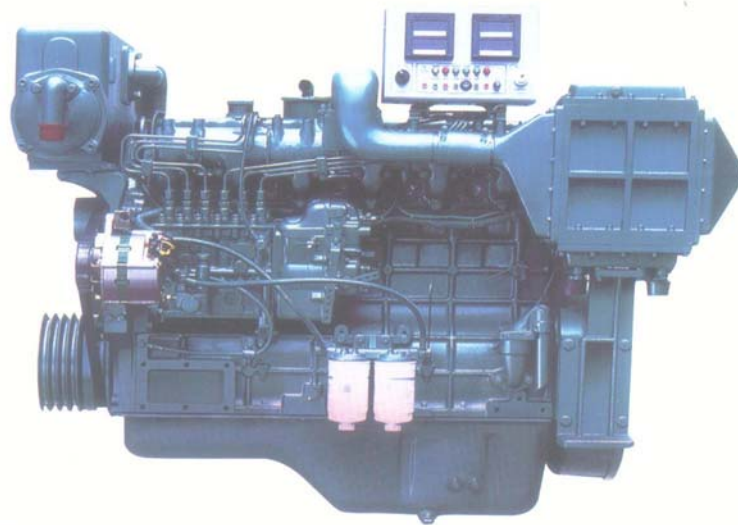
Engine Speed: 750~2000 RPM

Ratio	2.03	2.59	3.04	3.62	4.11	4.65	5.06	5.47	5.81
Rate(hp/rpm)	0.135					0.127	0.120	0.105	0.095

L×W×H: 578×744×830mm
 Bell housing:SAE 1
 Options/Comments: Mechanical or Electrical remote control
 Centre distance: 225 mm
 Engine: NT-855-M240,CAT3406 ...

Net Weight: 470kg
 Flange: SAE 14

YC6B YC6J



YC6B YC6J Series Marine Engine

Product Model	Power/rotating speed (KW/rpm)		Inspiratory way	Output volume (L)	Net Weight (kg)	L*W*H (mm)	Flywheel specifications	flywheelcasing specifications	shipbuilding inspection certification	Performance
	fixed point	1hr								
YC6108CA	63/1500	69.3/1500	natural aspirated	6.871	700	1252*780*1075	SAE11.5	SEA2	ZC, ZY, CCS	main engine or auxiliary engine
YC6108CA1	82/2000	90.2/2065	natural aspirated	6.871	700	1252*780*1075	SAE11.5	SEA2	ZC, ZY, CCS	main engine
YC6108ZC	80/1500	88/1500	turbocharging	6.871	700	1293*780*1198	SAE11.5	SEA2	ZC, ZY, CCS	main engine or auxiliary engine
YC6108ZCA	103/2300	113.3/2374	turbocharging	6.871	700	1293*780*1198	SAE11.5	SEA2	ZC, ZY, CCS	main engine
YC6108ZLCA	90/1500	99/1548	turbocharging intercooling	6.871	750	1420*810*1020	SAE11.5	SEA2	ZC, ZY, CCS	main engine or auxiliary engine
YC6B150C	110/1800	121/1858	turbocharging intercooling	6.871	760	1415*877*1025	SAE11.5	SEA2	ZC, ZY, CCS	main engine
YC6B165C	120/2300	132/2374	turbocharging intercooling	6.871	760	1415*877*1025	SAE11.5	SEA2	ZC, ZY, CCS	main engine
YC6105CA	53/1500	58.3/1548	naturally aspirated	6.494	700	1252*780*1075	SAE11.5	SEA2	ZC, ZY, CCS	main engine or auxiliary engine
YC6105CA1	66/2000	72.6/2065	naturally aspirated	6.494	700	1252*780*1075	SAE11.5	SEA2	ZC, ZY, CCS	main engine



HC65

HC65 MARINE GEARBOX MAX.163 HP at 2500RPM

Engine Speed: 1000~2500 RPM

Ratio	1.53	2.03	2.50	2.96	3.50
Rate(hp/rpm)	0.065				0.060

L×W×H: 311×460×544mm

Bell housing:SAE 2,3

Centre distance: 142 mm

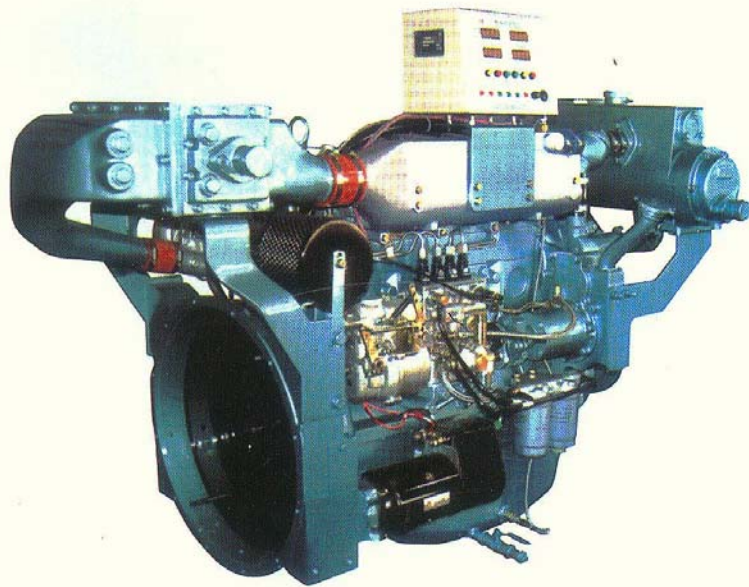
Engine: 6BT5.9-M ...

Rated propeller thrust: 14.7 KN

Net Weight: 130kg

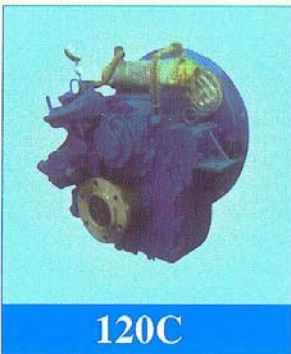
Flange: SAE 10,11.5

WD415 Series



The Model Table of steyr WD415 Series Marine Diesel Engine

Model	Order No.	Intake mode	Rated power /speed(kw/r/min)	Overload power /speed (kw/r/min)	L×W×H(mm)	Min.full load fuel consumption (g/kw.h)	kg Quality	Adaptable gearbox type
WD415.24C	41524C01	Turbocharged intercooled	158/2100	174/2163	1610×830×1170	198	800	135.120C MB242
	41524C02		148/1800	163/1858				
	41524C03		135/1500	149/1545				
WD415.16C	41516C01	Turbocharged	103/2100	113/2163	1255×830×1170	203	720	
	41516C02		110/1800	110/1858				
	41516C03		92/1500	101/1545				



120C

120C MRINE GEARBOX MAX.340HP at 2500RPM

Engine Speed: 1500~2500 RPM

Ratio	1.48	1.94	2.45	2.96	3.35
Rate(hp/rpm)	0.136			0.122	0.109

L×W×H: 352×694×650mm

Net Weight: 225kg

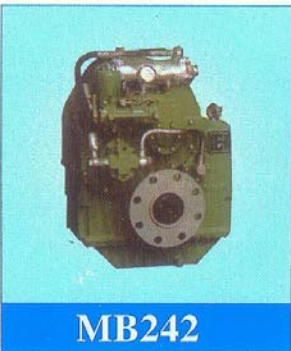
Bell housing:SAE 1,2,3

Flange: SAW14 ,11½

Options/Comments: Mechanical or Electrical remote operation

Centre distance: 180 mm

Engine: NT-855-M240; CAT3208TA ...



MB242

MB242 MARINE GEARBOX MAX.350 HP at 2500RPM

Engine Speed: 1000~2500 RPM

Ratio	3.04	3.52	3.95	4.53	5.12	5.56	5.88
Rate(hp/rpm)	0.140			0.136	0.128	0.100	

L×W×H: 424×744×763mm

Net Weight: 385kg

Bell housing:SAE 0,1

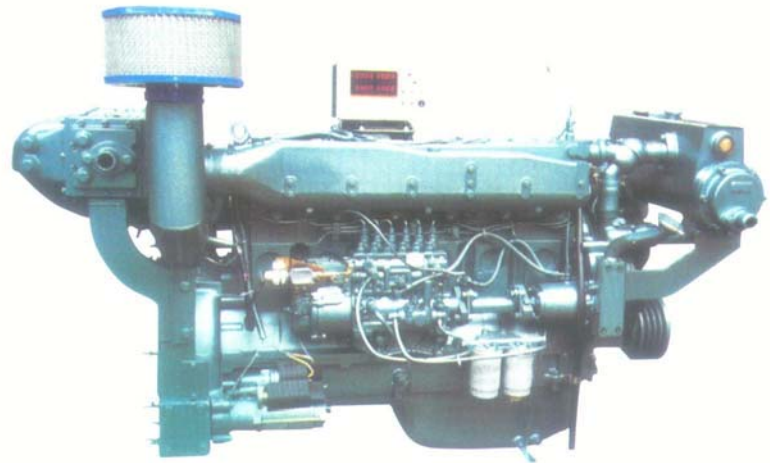
Flange: SAW14,11½

Options/Comments: Mechanical remote operation

Centre distance: 242 mm

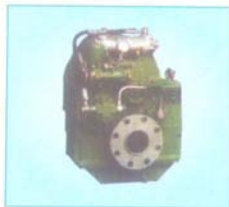
Engine: NT-855-M240; CAT3406 ...

WD615 Series



The Model Table of steyr WD615 Series Marine Diesel Engine

Model	Order No.	Intake mode	Rated power /speed(kw/r/min)	Overload power /speed (kw/r/min)	L×W×H(mm)	Min.full load fuel consumption (g/kw.h)	kg Quality	Adaptable gearbox type
WD615.61C	61561C01N	6×126×130	110/1800	121/1858	1492×830×1170	202	850	135.120C.MB242. MB270A.300
	61561C02N		140/1800	154/1858				
	61561C03N		110/1500	121/1545				
	61561C04N		120/1500	132/1545				
	61561C05N		155/2000	170.5/2060				
WD615.64C	61564C01N	6×126×130	147/1500	162/1545	1492×830×1170	202	850	135.120C.MB242. MB270A.300
	61564C02N		158/1800	174/1858				
	61564C03N		147/1800	162/1858				
WD615.67C	61567C01N	6×126×130	176/1800	194/1858	1912×830×1170	198	850	135.120C.MB242 MB270A.300 MB242.MB270A.300.D300A
	61567C02N		180/2000	198/2060				
	61567C03N		164/1500	180/1545				
WD615.68C	61568C01N	6×126×130	200/1800	220/1858	1912×830×1170	197	900	MB270A.300. D300A.120C
	61568C02N		205/2100	226/2163				
	61568C03N		180/1500	198/1545				
WD615.46C	61546C01N	6×126×130	240/2100	264/2163	1912×830×1170	195	900	MB270A.300. D300A.HC120C
	61546C02N		230/1800	253/1858				
	61546C03N		202/1500	222/1500				
WD615.57C	61557C01	6×126×130	257/2000	283/2060	1960×830×1170	192	950	MB270A.300. HC200.D300A
	61557C02		245/1800	270/1858				
	61557C03		220/1500	242/1545				



MB242 MARINE GEARBOX MAX.350 HP at 2500RPM

Engine Speed: 1000–2500 RPM

Ratio	3.04	3.52	3.95	4.53	5.12	5.56	5.88
Rate(hp/rpm)	0.140			0.136	0.128	0.100	

L×W×H: 424×744×763mm
 Bell housing:SAE 0.1
 Options/Comments: Mechanical remote operation
 Centre distance: 242 mm
 Engine: NT-855-M240; CAT3406...

Net Weight: 385kg
 Flange: SAW14,11/



D300A MARINE GEARBOX MAX.805 HP at 2300RPM

Engine Speed: 1000–2300 RPM

Ratio	4.00	4.48	5.05	5.52	5.90	6.56	7.06	7.63
Rate(hp/rpm)	0.35	0.33	0.30	0.25	0.20	0.17		

L×W×H: 638×920×1040mm
 Bell housing:SAE 0.1
 Options/Comments: PTO device available; Mechanical or Electrical remote control
 Centre distance: 355 mm
 Engine: KTA19-M600; TBD234V12 ...

YC6A



YC6A Series Marine Engine

Product Model	Power/rotating speed (KW/rpm)		Inspiratory way	Output volume (L)	Net Weight (kg)	L*W*H (mm)	Flywheel specifications	flywheelcasing specifications	shipbuilding inspection certification	Performance
	fixed point	1hr								
YC6108ZLCB	112/1500	123.2/1548	turbocharging intercooling	7.252	770	1415*910*1075	SAE11.5	SEA2	ZC, ZY, CCS	main engine or auxiliary engine
YC6A170C	125/1500	137.5/1548	turbocharging intercooling	7.252	770	1415*910*1075	SAE11.5	SEA2	ZC, ZY, CCS	main engine or auxiliary engine
YC6A190C	140/1800	154/1858	turbocharging intercooling	7.252	770	1415*910*1075	SAE11.5	SEA2	ZC, ZY, CCS	main engine
YC6A195C	145/2300	159.5/2374	turbocharging intercooling	7.252	770	1415*910*1075	SAE11.5	SEA2	ZC, ZY, CCS	main engine
YC6A220C	162/2300	178.2/2374	turbocharging intercooling	7.252	770	1415*910*1075	SAE11.5	SEA2	ZC, ZY, CCS	main engine



MV100

MV100 MARINE GEARBOX(7°inclination) MAX.408 HP at 3000RPM

Engine Speed: 1500~3000 RPM

Ratio	1.23	1.62	2.07	2.52	2.87
Rate(hp/rpm)	0.123			0.111	0.099

L×W×H: 390×630×580mm

Net Weight: 220kg

Bell housing:SAE 1,2

Flange: SAE 14, 11½

Options/Comments: Mechanical remote operation

Centre distance: Input and output coaxality

Engine: NT-855-M240; MWM D234 V8 ...



135A

135A MARINE GEARBOX MAX.272 HP at 2000RPM

Engine Speed: 750~2000 RPM

Ratio	2.03	2.59	3.04	3.62	4.11	4.65	5.06	5.47	5.81
Rate(hp/rpm)	0.135				0.127	0.120	0.105	0.095	

L×W×H: 578×744×830mm

Net Weight: 470kg

Bell housing:SAE 1

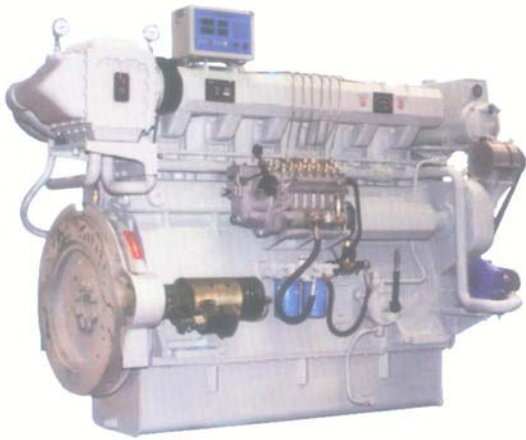
Flange: SAE 14

Options/Comments: Mechanical or Electrical remote control

Centre distance: 225 mm

Engine: NT-855-M240,CAT3406 ...

Z6150 Marine Engine



HC200 MARINE GEARBOX MAX.440 HP at 2200RPM

Engine Speed: 1000~2200 RPM

Ratio	1.48	2.00	2.28
Rate(hp/rpm)	0.20		

LxWxH: 430x744x708mm

Net Weight: 280 kg

Bell housing: SAE1, 2

Flange: SAE14, 11 1/2

Options/Comments: Mechanical or Electrical remote operation

Centre distance: 190 mm

Engine: NT-855-M240; CAT 3406TA...

HCC200 MARINE GEARBOX MAX.500 HP at 2500RPM

Engine Speed: 1000~2500 RPM

Ratio	1.034	1.451	1.997	2.422	2.935
Rate(hp/rpm)	0.20				

LxWxH: 554x750x700mm

Net Weight: 400 kg

Bell housing: SAE1

Flange: SAE14

Options/Comments: Mechanical or Electrical remote control

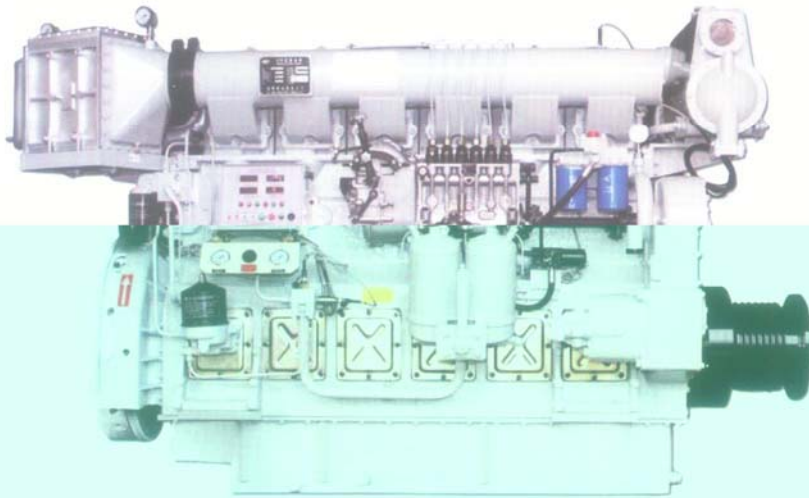
Centre distance: 0 mm

Engine: NT-855-M240; CAT 3406TA...

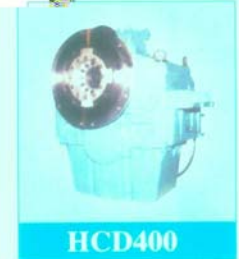
Z6150系列柴油机主要技术参数

型号	Z6150Z.C-1	Z6150Z.C-2	Z6150Z.C-3	Z6150Z.C-4	Z6150Z.C	Z6150Z.C-5	Z6150Z.C-6	Z6150Z.C-7	Z6150Z.C-8	Z6150Z.C-9	Z6150Z.C-10
	Z6150Z.D-1	Z6150Z.D-2	Z6150Z.D-3	Z6150Z.D-4	Z6150Z.D	Z6150Z.D-5	Z6150Z.D-6	Z6150Z.D-7	Z6150Z.D-8	Z6150Z.D-9	Z6150Z.D-10
型式	直列立式、四冲程、直喷、喷气涡轮增压、空气中间冷却										
气缸数	5										
气缸直径/ 活塞行程mm	150/190										
压缩比	15										
活塞总排量L	20.15										
标定转速r/min	1000						1200				
标定功率KW	147	164	164	202	220	240	197	221	242	265	288
平均有效压力MPa	0.875	0.977	1.096	1.203	1.310	1.429	0.977	1.096	1.203	1.315	1.429
活塞平均速度 m/s	6.33						7.6				
最低稳定转速 r/min	400						540				
燃油消耗率 g/kw.h	205			200			205			200	
机油消耗率 g/kw.h	1.00										
自轴转向 及发火顺序	自飞轮端网自由端视 逆时针 发火顺序 1-5-3-6-2-4										
起动方式	电马达及马达起动										
冷却方式	闭式水冷										
润滑方式	压力润滑										
曲轴以上活塞吊装高度(mm)	1120										
外形尺寸(mm)	2000×1156×1650										
净质量(kg)	2700										

Z6170 Marine Engine



HC400



HCD400

HC400 MARINE GEARBOX MAX.810 HP at 1800RPM

Engine Speed: 1000-1800 RPM

Ratio	2.04	2.50	3.00	3.42	4.06
Rate(hp/rpm)	0.41				0.35

LxWxH: 641x890x890mm Net Weight: 820 kg
 Bell housing: SAE 0.1 Flange: SAE 18, 16, 14
 Options/Comments: PTO device available; Mechanical or Electrical remote control
 Centre distance: 264mm
 Engine: CAT3412TA, TBD604BL6 ...
 Note: The "Rate" will rise 8% if high-flexible coupling is used.

HCD400 MARINE GEARBOX MAX.810 HP at 1800RPM

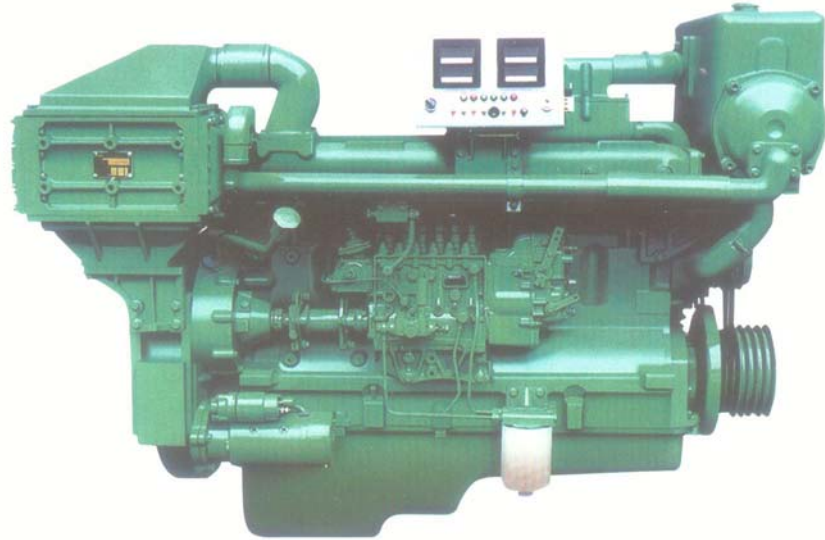
Engine Speed: 1000-1800 RPM

Ratio	3.96	4.33	4.43	4.70	5.00	5.53	5.89
Rate(hp/rpm)	0.41				0.362	0.337	

LxWxH: 641x950x988mm Net Weight: 1100 kg
 Bell housing: SAE 0.1 Flange: SAE 18, 16, 14
 Options/Comments: Mechanical or Electrical remote control
 Centre distance: 355 mm
 Engine: KT38-M800; TBD604BL6 ...
 Note: The "Rate" will rise 8% if high-flexible coupling is used.

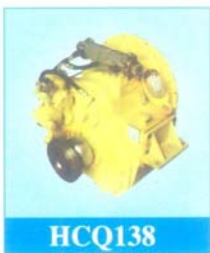
型号 Model	标定转速 (r/min) Rated speed	持续功率 (kW) Continuous output	平均有效压力 (MPa) Mean eff. Pressure	活塞平均速度 (m/s) Mean piston speed
Z6170ZLC	1000	300	1.322	6.67
Z6170ZLC-1	1000	220	0.969	6.67
Z6170ZLC-2	1000	258	1.137	6.67
Z6170ZLC-3	1200	330	1.212	8
Z6170ZLC-4	1200	350	1.285	8
Z6170ZLC-5	1200	260	0.955	8
Z6170ZLC-6	1200	300	1.101	8
Z6170ZLC-7	1500	400	1.175	10
Z6170ZLC-8	1500	450	1.322	10
Z6170ZLC-9	1350	400	1.306	9
Z6170ZLC-14	1200	250	0.918	8
Z6170ZLC-18	1200	385	1.414	8
Z6170ZLC-19	1000	330	1.454	6.67
Z6170ZLC-20	1350	430	1.404	9

YC6M



YC6M Series Marine Engine

Product Model	Power/rotating speed (KW/rpm)		Inspiratory way	Output volume (L)	Net Weight (kg)	L*W*H (mm)	Flywheel specifications	flywheelcasing specifications	shipbuilding inspection certification	Performance
	fixed point	1hr								
YC6M270C	199/1800	218.9/1858	turbocharging intercooling	9.84	1080	1652*939*1262	SAE14	SAE1	ZC, ZY, CCS	main engine
YC6M295C	216/1800	237.6/1856	turbocharging intercooling	9.84	1080	1652*939*1263	SAE14	SAE1	ZC, ZY, CCS	main engine
YC6M280C	206/2100	226.6/2168	turbocharging intercooling	9.84	1080	1652*939*1264	SAE14	SAE1	ZC, ZY, CCS	main engine
YC6M320C	234/2100	257.4/2168	turbocharging intercooling	9.84	1080	1652*939*1265	SAE14	SAE1	ZC, ZY, CCS	main engine
YC6MK300C	221/1500	243/1548	turbocharging intercooling	10.338	1080	1652*939*1266	SAE14	SAE1	ZC, ZY, CCS	main engine
YC6MK320C	235/1800	258.8/1858	turbocharging intercooling	10.338	1080	1652*939*1267	SAE14	SAE1	ZC, ZY, CCS	main engine
YC6MK330C	242/1500	266.2/1548	turbocharging intercooling	10.338	1080	1652*939*1268	SAE14	SAE1	ZC, ZY, CCS	auxiliary engine



HCQ138 MARINE GEARBOX MAX.390 HP at 2600RPM

Engine Speed: 1000-2600 RPM

Ratio	1.03	1.28	1.5	2.03	2.48	2.95
Rate(hp/rpm)	0.15					0.133

LxWxH: 504x619x616mm Net Weight: 200kg
 Bell housing:SAE 1.2 Flange: SAW11.5.14
 Options/Comments: Mechanical or Electrical remote operation
 Centre distance: 165 mm
 Engine: NT-855-M240; CAT3406 ...
 Rated propeller thrust: 25KN



HCQ300 MARINE GEARBOX MAX.782 HP at 2300RPM

Engine Speed: 1000-2500 RPM

Ratio	1.06	1.46	2.05	2.38
Rate(hp/rpm)	0.34			0.32

LxWxH: 533x681x676mm Net Weight: 350kg
 Bell housing:SAE 0.1 Flange: SAW14,16/18
 Options/Comments: Mechanical or Electrical remote operation
 Centre distance: 203 mm
 Engine: KTA19-M600;CAT3412T; TBD234V12 ...
 Rated propeller thrust: 40KN



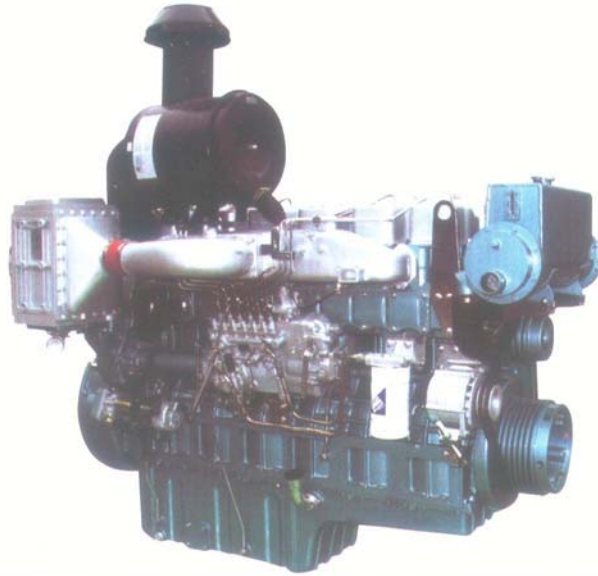
HC138 MARINE GEARBOX MAX.375 HP at 2500RPM

Engine Speed: 1000-2500 RPM

Ratio	2.00	2.52	3.00	3.57	4.05	4.45
Rate(hp/rpm)	0.15					

LxWxH: 520x792x760mm Net Weight: 360kg
 Bell housing:SAE 1 Flange: SAW11.5.14
 Options/Comments: Pneumatic(recommended) or Electrical remote control
 Centre distance: 225 mm
 Engine: 6135Ca, Nt-855-M240 ...
 Rated propeller thrust: 30KN

YC6T



YC6T Series Marine Engine

Product Model	Power/rotating speed (KW/rpm)		Inspiratory way	Output volume (L)	Net Weight (kg)	L*W*H (mm)	Flywheel specifications	flywheelcasing specifications	shipbuilding inspection certification	Performance
	fixed point	1hr								
YC6T300C	220/1200	242/1238	turbocharging intercooling	16.35	1960	1880x1000x1860	SAE14	SAE1	ZC, CCS	main engine
YC6T350C	257/1200	282.7/1238	urbocharging intercooling	16.35	1960	1880x1000x1860	SAE14	SAE1	ZC, CCS	main engine
YC6T380C	279/1200	307.4/1238	turbocharging intercooling	16.35	1960	1880x1000x1860	SAE14	SAE1	ZC, CCS	main engine
YC6T375C	275/1500	302.5/1548	urbocharging intercooling	16.35	1960	1880x1000x1860	SAE14	SAE1	ZC, ZY, CCS	main engine or auxiliary engine
YC6T400C	294/1500	323.4/1548	turbocharging intercooling	16.35	1960	1880x1000x1860	SAE14	SAE1	ZC, ZY, CCS	main engine or auxiliary engine
YC6T410C	300/1500	330/1548	urbocharging intercooling	16.35	1960	1880x1000x1860	SAE14	SAE1	ZC, ZY, CCS	main engine or auxiliary engine
YC6T450C	330/1500	363/1548	turbocharging intercooling	16.35	1960	1880x1000x1860	SAE14	SAE1	ZC, ZY, CCS	main engine or auxiliary engine
YC6T390C	287/1800	315/1858	urbocharging intercooling	16.35	1960	1880x1000x1860	SAE14	SAE1	ZC, ZY, CCS	main engine
YC6T420C	309/1800	340/1858	turbocharging intercooling	16.35	1960	1880x1000x1860	SAE14	SAE1	ZC, ZY, CCS	main engine
YC6T480C	352/1800	387.2/1858	urbocharging intercooling	16.35	1960	1880x1000x1860	SAE14	SAE1	ZC, ZY, CCS	main engine
YC6T510C	375/1800	412.5/1858	turbocharging intercooling	16.35	1960	1880x1000x1860	SAE14	SAE1	ZC, ZY, CCS	main engine
YC6T540C	396/1800	435.6/1858	urbocharging intercooling	16.35	1960	1880x1000x1860	SAE14	SAE1	ZC, ZY, CCS	main engine



HCQ300

HCQ300 MARINE GEARBOX MAX.782HP at 2300RPM

Engine Speed: 1500~2300 RPM

Ratio	1.06	1.46	2.05	2.38
Rate(hp/rpm)	0.34			0.32

L×W×H: 533×681×676mm
 Bell housing:SAE 0.1
 Options/Comments: Mechanical or Electrical remote operation
 Centre distance: 203 mm
 Engine: KTA19-M600; CAT3412T; TBD234V12 ...
 Rated propeller thrust: 40KN



300

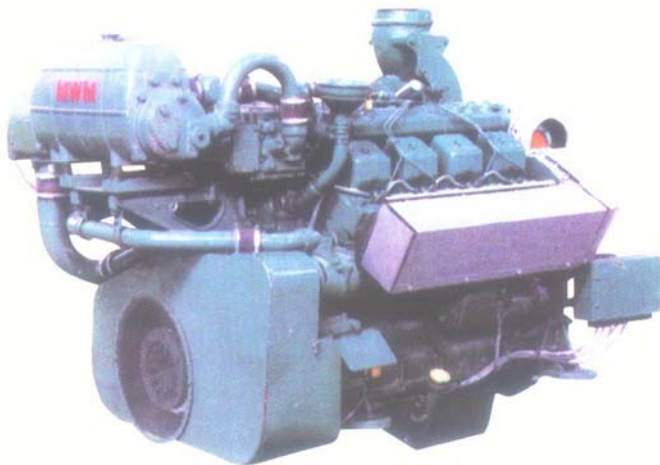
300 MARINE GEARBOX MAX.805HP at 2300RPM

Engine Speed: 1500~2300 RPM

Ratio	2.04	2.54	3.00	3.53	4.10	4.61	4.94	5.44
Rate(hp/rpm)	0.35		0.33	0.30	0.25	0.20		0.17

L×W×H: 638×870×864mm
 Bell housing:SAE 0.1
 Options/Comments: PTO device available; Mechanical or Electrical remote control
 Centre distance: 264 mm
 Engine: KTA19-M600; TBD234V12 ...

TBD234



Main technical Data	
Bore/Stroke	128/140mm
Cylinder Arrangement	V-60°
Number of Cylinder	6,8,12
Unit Cylinder Volume	1.8dm ³
Compression Ratio	15:1
Max. combustin Pressure	15Mpa
Min.Speed at Full Load	1000r/min
Min.steady Speed	650r/min
Ignition Speed (20°C)	115r/min
Direction	Counter Clockwise Rotation (From the End of Flywheel)

The Marine Main Engine

Application	Continues Duty			Medium Duty					Fuel Consumption and Mean Effective Pressure [MCFN]			
	Work Boats			High Speed Boats		High Speed Pubic Vessel						
Ambient Condition	Air Temp./Charging Air Coolant Temp./Air Pressure/Relative Humidity: 45°C/32°C/0.1MPa/60%											
Power Code	MCFN			MCFN	MXN 2h/12h	MC15N	MCFN 2h/12h	MCFN 0.5h/6h	g/kw.h/bar			
Rated Speed r/min	1500	1800	2100	2200	2265	2200	2265	2300	1500	1800	2100	
TBD234V6	KW	186	222	242	302	332	302	332	347	198/1.38	201/1.37	206/1.28
TBD234V8		249	296	323	405	445	405	445	465	195/1.38	198/1.37	201/1.28
TBD234V12		373	444	485	605	665	605	665	695	196/1.38	198/1.37	203/1.28
TD234V6		116	132	-	-	-	-	-	-	210/0.85	213/0.82	-
TD234V8		160	186	-	-	-	-	-	-	210/0.88	213/0.82	-
Lub.Oil Consumption	≤1.4/Kw.h											



HC200 MARINE GEARBOX MAX.440 HP at 2200RPM

Engine Speed: 1000-2200 RPM

Ratio	1.48	2.00	2.28
Rate(hp/rpm)	0.20		

L×W×H: 430×744×708mm Net Weight: 280 kg
 Bell housing: SAE1, 2 Flange: SAE14, 11 1/2
 Options/Comments: Mechanical or Electrical remote operation
 Centre distance: 190 mm
 Engine: NT-855-M240, CAT 3406TA...

HC200



HCQ300



HC201 MARINE GEARBOX MAX.500 HP at 2500RPM

Engine Speed: 1000-2500 RPM

Ratio	2.46	2.955	3.526
Rate(hp/rpm)	0.20		

L×W×H: 556×691×735mm Net Weight: 350kg
 Bell housing:SAE 0,1 Flange: SAW14,16,18
 Options/Comments: Mechanical or Electrical remote control
 Centre distance: 205 mm
 Engine: 6135Ca, NTA-855-M400...
 Rated propeller thrust: 40KN

HC201

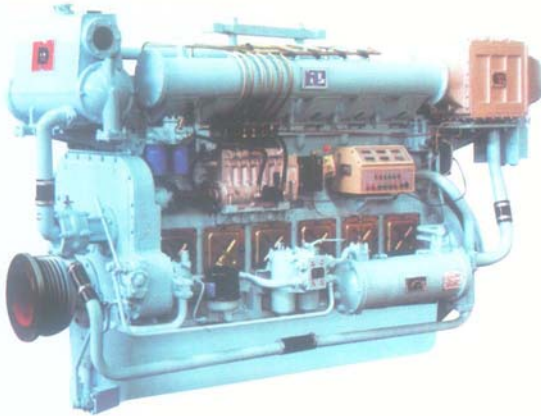
HCQ300 MARINE GEARBOX MAX.782 HP at 2300RPM.

Engine Speed: 1000-2500 RPM

Ratio	1.06	1.46	2.05	2.38
Rate(hp/rpm)	0.34			

L×W×H: 533×681×676mm Net Weight: 350kg
 Bell housing:SAE 0,1 Flange: SAW14,16/18
 Options/Comments: Mechanical or Electrical remote operation
 Centre distance: 203 mm
 Engine: KTA19-M600;CAT3412T; TBD234V12...
 Rated propeller thrust: 40KN

N6160 Marine Engine



HC400

HC400 MARINE GEARBOX MAX.810 HP at 1800RPM

Engine Speed: 1000-1800 RPM

Ratio	2.04	2.50	3.00	3.42	4.06
Rate(hp/rpm)	0.41				0.35

L×W×H: 641×890×890mm

Net Weight: 820 kg

Bell housing: SAE 0.1

Flange: SAE 18, 16, 14

Options/Comments: PTO device available; Mechanical or Electrical remote control

Centre distance: 264mm

Engine: CAT3412TA, TBD604BL6 ...

Note: The "Rate" will rise 8% if high-flexible coupling is used.



300

300 MARINE GEARBOX MAX.805HP at 2300RPM

Engine Speed: 1500-2300 RPM

Ratio	2.04	2.54	3.00	3.53	4.10	4.61	4.94	5.44
Rate(hp/rpm)	0.35		0.33	0.30	0.25	0.20		0.17

L×W×H: 638×870×864mm

Net Weight: 740kg

Bell housing: SAE 0.1

Flange: SAE 18, 16, 14

Options/Comments: PTO device available; Mechanical or Electrical remote control

Centre distance: 264 mm

Engine: KTA19-M600; TBD234V12 ...

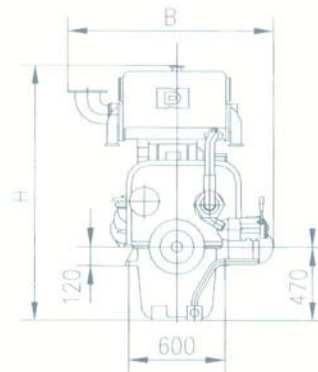
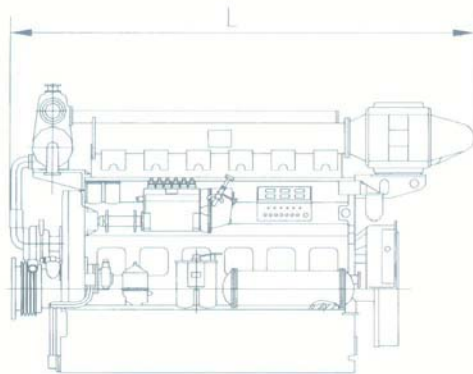
N6160 船用柴油机主要技术规格

Main Technical Specifications of Series N6160 Marine Diesel Engines

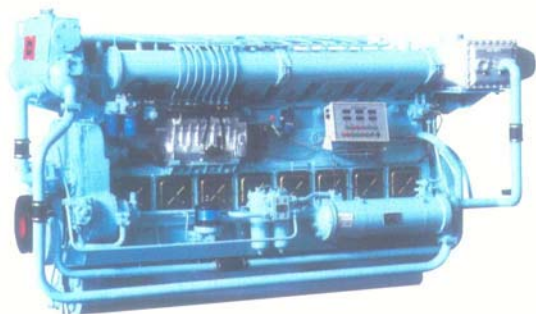
型号 Model	右机(Starboard) 左机(Port)	N6160Z_C2	N6160Z_C6A	N6160Z_C6	N6160Z_C10	N6160Z_C4A	N6160Z_C4	N6160Z_C12
		N6160Z_C3	N6160Z_C5	N6160Z_C7	N6160Z_C11A	N6160Z_C5A	N6160Z_C7A	N6160Z_C13
型式 Type	四冲程、直接喷射、增压、中冷 4-stroke、Direct Injection、Turbocharged、Interstage Cooled							
额定功率(千瓦) Rated Output(KW)		235.3	265	294	235.3	265	294	331
额定转速(转/分) Rated Speed(r/min)		1000			1200			
1小时功率(千瓦/转/分) Power of One Hour(KW/r/min)		258.8/1032	291.5/1032	323.4/1032	258.5/1238	291.5/1238	323.4/1238	364.1/1238

N6160 船用柴油机外形尺寸图

Overall dimension of model N6160 marine diesel engines



N8160 Marine Engine



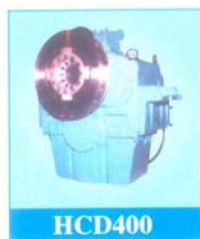
HC400

HC400 MARINE GEARBOX MAX.810 HP at 1800RPM

Engine Speed: 1000-1800 RPM

Ratio	2.04	2.50	3.00	3.42	4.06
Rate(hp/rpm)	0.41				0.35

L×W×H: 641×890×890mm Net Weight: 820 kg
 Bell housing: SAE 0, 1 Flange: SAE 18, 16, 14
 Options/Comments: PTO device available; Mechanical or Electrical remote control
 Centre distance: 264mm
 Engine: CAT3412TA, TBD604BL6 ...
 Note: The "Rate" will rise 8% if high-flexible coupling is used.



HCD400

HCD400 MARINE GEARBOX MAX.810 HP at 1800RPM

Engine Speed: 1000-1800 RPM

Ratio	3.96	4.33	4.43	4.70	5.00	5.53	5.89	
Rate(hp/rpm)	0.41						0.362	0.337

L×W×H: 641×950×988mm Net Weight: 1100 kg
 Bell housing: SAE 0, 1 Flange: SAE 18, 16, 14
 Options/Comments: Mechanical or Electrical remote control
 Centre distance: 355 mm
 Engine: KT38-M800; TBD604BL6 ...
 Note: The "Rate" will rise 8% if high-flexible coupling is used.

N8160 型船用柴油机主要技术规格

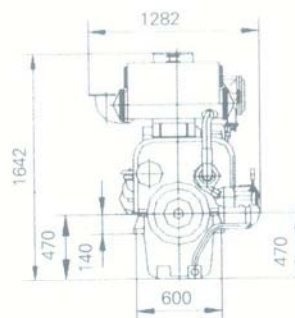
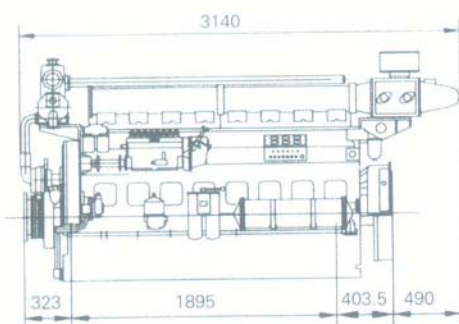
Main Technical Specifications of Series N8160 Marine Diesel Engines

型号 Model	右机(Starboard)	N8160Z ₁ C2	N8160Z ₁ CA	N8160Z ₁ C16	N8160Z ₁ C2	N8160Z ₁ C12	N8160Z ₁ CD	N8160Z CD2
	左机(Port)	N8160Z ₁ C ₂ 9			N8160Z ₁ C ₃			
型式 Type	四冲程、直接喷射、增压、中冷 4-stroke, Direct Injection, Turbocharged, Interstage Cooled							
额定功率(千瓦) Rated Output(KW)	400	353	464	400	434	400	400	400
标定转速(转/分) Rated Speed(r/min)	1000			1200			1000	1200
超负荷功率(千瓦) Overload Power(KW)	440	388	510	440	477.4	400	440	440

注：本资料所载的有关数据仅供参考，以我公司提供的技术文件为准。因产品改进，本资料所载产品相关数据及文字表述如有变动，恕不另行通知。

N8160型船用柴油机外形尺寸图

Overall dimension of model N8160 marine diesel engines



TBD604BL6

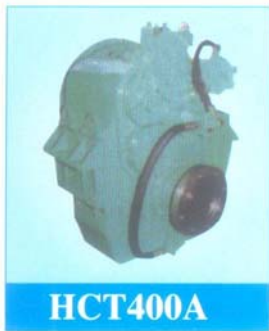


Main technical Data	
Bore/Stroke	170/195mm
Cylinder Arrangement	Line
Number of Cylinder	6
Unit Cylinder Volume	4.43dm ³
Compression Ratio	14:01
Min.steady Speed	600r/min
Ignition Speed (5°C)	150r/min
Direction	Counter Clockwise Rotation (From the End of Flywheel)
Overall Size (LWH)	2242 1143 1953mm
Weight	2550kg

The Marine Main Engine

Application	Continues Duty													
	Passenger Ship/Work Boats							Power Station/Pump Set						
Power Code	MCFN							MCXN 1h/12h						
Ambient Condition	Air Temp./Charging Air Coolant Temp./Air Pressure/Relative Humidity:45°C/32°C/0.1MPa/60%													
Rated Speed	r/min	1200	1350	1500	1650	1800	1200	1500	1800					
Rated Power	kW	372	412	450	530	586	540	637	372	480	450	550	540	600
Mean Effective Pressure	Mpa	1.4	1.38	1.36	1.6	1.6	1.36	1.6	1.4	1.81	1.36	1.66	1.36	1.51
Fuel Consumption	g/Kw·h	195	197	197	192	193	202	200	195	190	197	191	202	200
Lub. Oil Consumption	g/Kw·h	≤1												

Rated Power and Fuel Consumption:Hu=42700kJ/kg./engine-driven lubricating oil pressure pump/engine-driven coolant pump for recirculated water (engine circuit)/engine driven fuel pump(S).



HCT400A MARINE GEARBOX MAX.945HP at 2100RPM

Engine Speed: 1000~2100 RPM

Ratio	6.09	6.49	6.93	7.42	7.95	8.40	9.00	9.47
Rate(hp/rpm)	0.45		0.42		0.39	0.36	0.33	

L×W×H: 800×1052×1130mm

Net Weight: 1450kg

Bell housing:SAE 0,1

Flange: SAW14,16,18

Options/Comments: Mechanical or Electrical remote control

Centre distance: 375 mm

Engine: KT38-M800; TBD604BL6; CAT3412TA ...

Rated propeller thrust: 82KN

HCT400A



HCT400A/1 MARINE GEARBOX MAX.945HP at 2100RPM

Engine Speed: 1500~2100 RPM

Ratio	8.15	8.69	9.27	9.94	10.60	11.37	12.00	13.96
Rate(hp/rpm)	0.45		0.43		0.40	0.37	0.36	0.278

L×W×H: 869×1100×1275mm

Net Weight: 1500kg

Bell housing:SAE 0,1

Flange: SAW14,16,18

Options/Comments: Mechanical or Electrical remote control

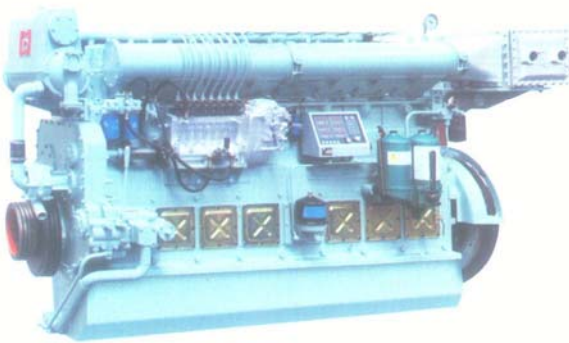
Centre distance: 465 mm

Engine: KTA38-M800; CAT3412TA; TBD604BL6 ...

Rated propeller thrust: 120KN

HCT400A/1

N8170 Marine Engine



HCQ502

HCQ502 MARINE GEARBOX MAX.1265 HP at 2300RPM

Engine Speed: 1000-2300 RPM

Ratio	2.95
Rate(hp/rpm)	0.55

L×W×H: 706×856×875mm Net Weight: 700 kg
 Bell housing: SAE 0.7,1 Flange: SAE 18, 16
 Options/Comments: Mechanical or Electrical remote control
 Centre distance: 264mm
 Engine: KTA38-M940; CAT3508TA; TBD234V16 ...



HC600A

HC600A MARINE GEARBOX MAX.1365 HP at 2100RPM

Engine Speed: 1000-2100 RPM

Ratio	2.00	2.48	3.00	3.58	3.89
Rate(hp/rpm)	0.60		0.54		0.49

L×W×H: 745×1094×1126mm Net Weight: 1300 kg
 Bell housing: SAE00.0 Flange: SAE21.18,16,(14)
 Options/Comments: Mechanical or Electrical remote control
 Centre distance: 320 mm
 Engine: KT38-M1045; CAT3508B; TBD604BV8 ...
 Note:The "Rate" will rise 8% if high-flexible coupling is used.

N8170 型船用柴油机主要技术规格

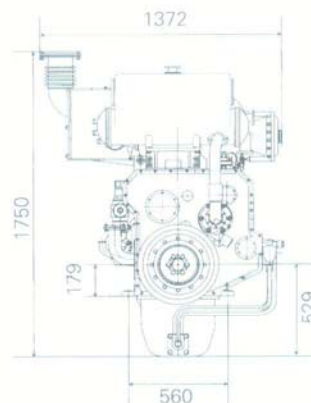
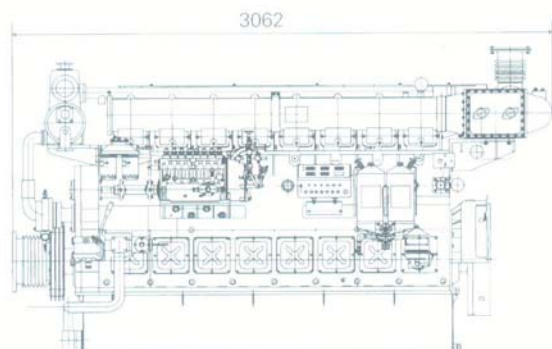
Main Technical Specifications of Series N8160 Marine Diesel Engines

型号 Model	N8170Z_C1	N8170Z_C5	N8170Z_C2	N8170Z_C6	N8170Z_C3	N8170Z_C7	N8170Z_C4
型式 Type	直列、四冲程、增压中冷、直接喷射、水冷、不可逆转 In-line, 4-stroke, Turbocharged, Interstage, Direct injection, Water cooling, Irreversibl						
标定功率(千瓦) Rated Output(kW)	441	480	480	529	540	600	600
标定转速(转/分) Rated Speed(r/min)	1000		1200		1350		1500
超负荷功率(千瓦) Overload Power(kW)	485	528	528	582	594	660	660

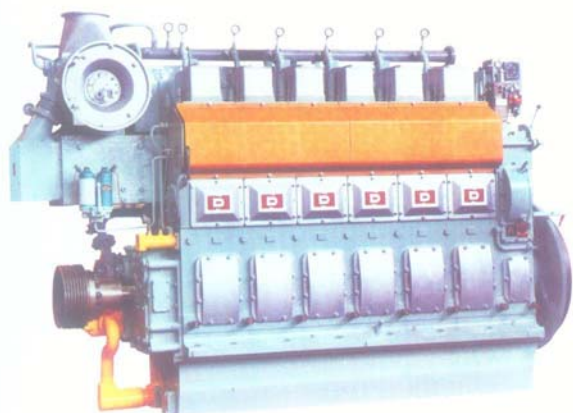
注：本资料所载的有关数据仅供参考，以我公司提供的技术文件为准。因产品改进，本资料所载产品相关数据及文字表述如有变动，恕不另行通知。

N8170型船用柴油机外形尺寸图

Overall dimension of model N8170 marine diesel engines



N6210 Marine Engine



HC1000 MARINE GEARBOX MAX.1900 HP at 1900RPM

Engine Speed: 600-1900 RPM

Ratio	2	2.5	3.04	3.48	4.06
Rate(hp/rpm)	1.0				0.884

LxWxH: 1056x1100x1050mm

Net Weight: 1800 kg

Bell housing:

Flange: SAE 21,18

Options/Comments: Mechanical remote operation

Centre distance: 335 mm

Engine: CW6200ZC, 6210ZL,---

HC1000

N6210 型船用柴油机主要技术规格

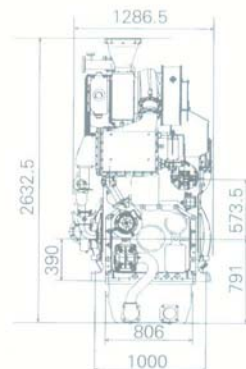
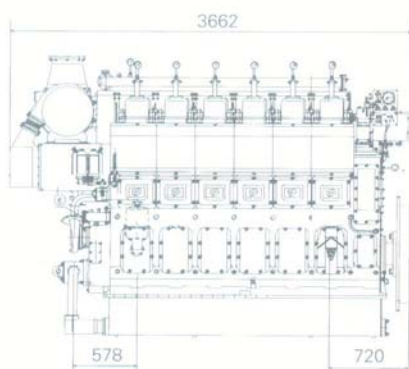
Main Technical Specifications of Series N6210 Marine Diesel Engines

型号 Model	右机(Starboard) 左机(Port)	N6210ZC10/11	N6210ZC12/13	N6210ZC4/5	N6210ZC18/19	N6210ZC8/9
型式 Type	直列、四冲程、直接喷射、增压、中冷、不可逆转 In-line, 4-stroke, Direct Injection, Turbocharged, Interstage, Irreversible					
额定功率(千瓦) Rated Output(kW)		441	551	662	882	1103
标定转速(转/分) Rated Speed(r/min)		600	750		1000	
超负荷功率(千瓦) Overload Power(kW)		485	606	728	970	1213

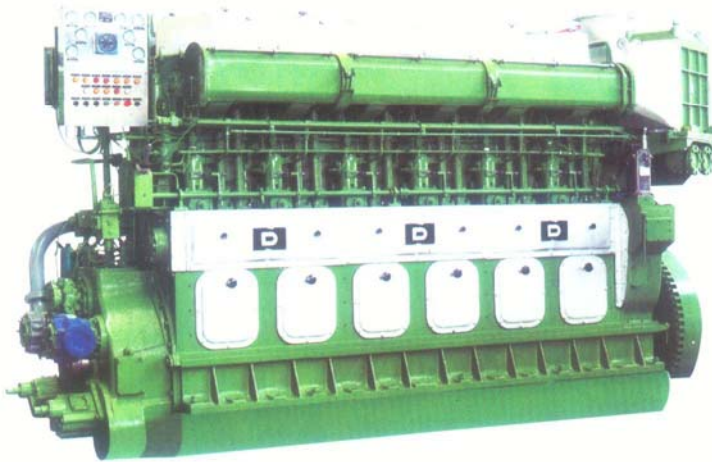
注：本资料所载的有关数据仅供参考，以我公司提供的技术文件为准。因产品改进，本资料所载产品相关数据及文字表述如有变动，恕不另行通知。

N6210型船用柴油机主要技术规格

Overall dimension of model N6210 marine diesel engines



GA6300 Marine Engine



可匹配的齿轮箱型号 Matched Gearbox



GWC30.32	2:1
GWC32.35	2:1
GWC36.39	2:1
GWC39.41	2:1
GWC42.45	2:5:1

GX6300 型船用柴油机主要技术规格

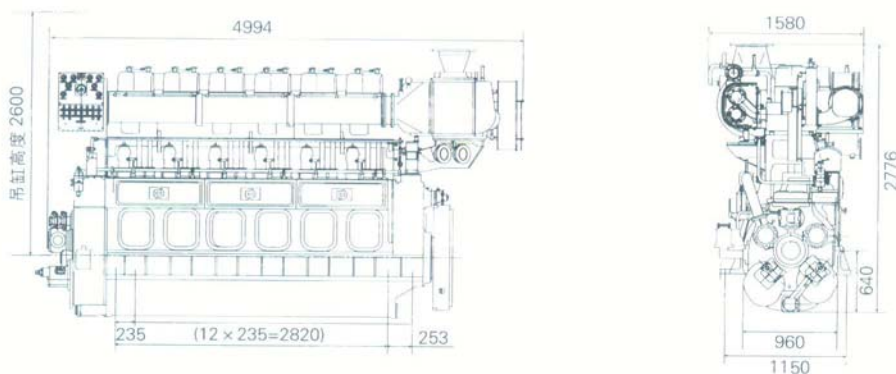
Main Technical Specifications of Series GA6300 Marine Diesel Engines

型号 Model	右机(Starboard)	GA6300ZCA	GA6300ZC10B	GA6300ZC6B	GA6300ZC18B	GA6300ZC16B	GA6300ZC26B	GA6300ZC28B
	左机(Port)	G6300ZCA1	GA6300ZC11B	GA6300ZC7B	GA6300ZC19B	GA6300ZC17B	GA6300ZC27B	GA6300ZC29B
型式 Type	四冲程、增压、中冷、不可逆转 4-stroke、Turbocharged、Injection、Irreversible							
标定功率(千瓦) Rated Output(kW)		735	971	1103	1323	1471	1471	1618
标定转速(转/分) Rated Speed(r/min)		500	428	500	550	600	750	750
超负荷功率(千瓦) Overload Power(kW)		809	1068	1213	1455	1618	1618	1779

注：本资料所载的有关数据仅供参考，以我公司提供的技术文件为准。因产品改进，本资料所载产品相关数据及文字表述如有变动，恕不另行通知。

GA6300型船用柴油机外形尺寸图

Overall dimension of model GA6300 marine diesel engines



TBD620



Main technical Data	
Bore/Stroke	170/195mm
Cylinder Arrangement	V-60°
Number of Cylinder	8,12,16
Unit Cylinder Volume	4.43dm ³
Compression Ratio	1
Min.steady Speed	600r/min
Ignition Speed (5°C)	150r/min
Direction	Counter Clockwise Rotation (From the End of Flywheel)

The Marine Main Engine

Application	Continues Duty			Medium Duty				Fuel Consumption and Mean Effective Pressure[MCFN]				
	Passenger Ship;Work Boats			High Speed Public Vessel								
Ambient Condition	Air Temp./Charging Air Coolant Temp./Air Pressure/Relative Humidity: 45°C/32°C/0.1MPa/60%											
Power Code	MCFN						MFN					
power level	A			B			C	D	g/kW-h/bar			
Rated Speed r/min	1500	1650	1800	1500	1650	1800	1860	1860	1500	1650	1800	
TBD620V8	Rated Power kW	829	870	920	915	960	1016	1120	1168	193/1.87	196/1.79	199/1.73
TBD620V12		1240	1034	1380	1370	1440	1524	1680	1752	189/1.87	192/1.79	195/1.73
TBD234V16		1658	1740	1840	1830	1920	2032	2240	2336	194/1.87	197/1.79	202/1.73
Lub. Oil Consumption	≤1g/Kw·h											

HCQ700A MARINE GEARBOX MAX.1875HP at 2500RPM

Engine Speed: 1000~2100 RPM

Ratio	1.5~2.5	2.78	2.96
Rate(hp/rpm)	0.75	0.70	0.67

LxWxH: 898x1104x1066mm

Net Weight: 900kg

Bell housing:SAE 0

Flange: SAW16,18

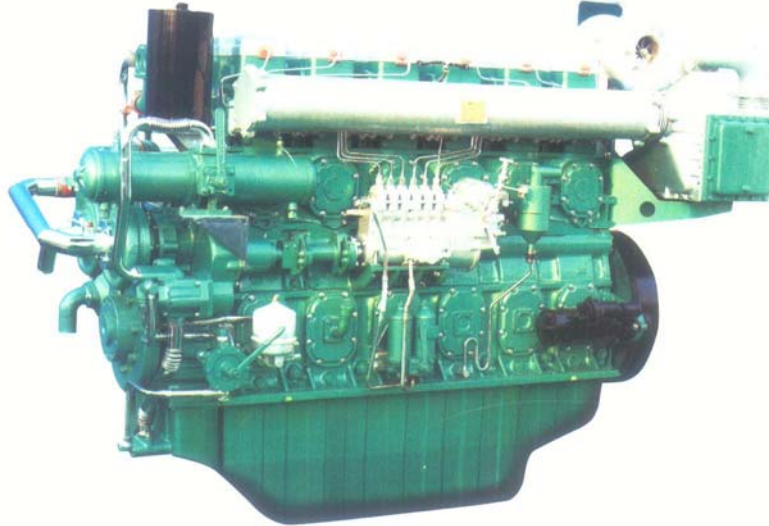
Options/Comments: Mechanical or Electrical remote operation

Centre distance: 290 mm

Engine: KTA38-M; CAT3508TA ...

Rated propeller thrust: 90KN

YC6C



YC6T Series Marine Engine

Product Model	Power/rotating speed (KW/rpm)		Inspiratory way	Output volume (L)	Net Weight (kg)	L*W*H (mm)	Flywheel specifications	flywheelcasing specifications	shipbuilding inspection certification	Performance
	fixed point	1hr								
YC6C925C	680/1350	748/1393	turbocharging intercooling	39.58	4300	2930x1230x1940	SAE18	NO	ZC、CCS	main engine
YC6C865C	636/1350	700/1393	urbocharging intercooling	39.58	4300	2930x1230x1940	SAE18	NO	ZC、CCS	main engine
YC6C820C	603/1200	663/1238	turbocharging intercooling	39.58	4300	2930x1230x1940	SAE18	NO	ZC、CCS	main engine
YC6C730C	536/1200	590.4/1238	urbocharging intercooling	39.58	4300	2930x1230x1940	SAE18	NO	ZC、CCS	main engine
YC6C670C	492/1200	541/1238	turbocharging intercooling	39.58	4300	2930x1230x1940	SAE18	NO	ZC、ZY、CCS	main engine
YC6C620C	455/1200	501/1238	urbocharging intercooling	39.58	4300	2930x1230x1940	SAE18	NO	ZC、ZY、CCS	main engine
YC6C700C	515/1000	567/1032	turbocharging intercooling	39.58	4300	2930x1230x1940	SAE18	NO	ZC、CCS	main engine
YC6C650C	478/1000	526/1032	urbocharging intercooling	39.58	4300	2930x1230x1940	SAE18	NO	ZC、CCS	main engine
YC6C530C	390/950-1000	429/980-1032	turbocharging intercooling	39.58	4300	2930x1230x1940	SAE18	NO	ZC、ZY、CCS	main engine
YC6C480C	352/950-1000	387/980-1032	urbocharging intercooling	39.58	4300	2930x1230x1940	SAE18	NO	ZC、ZY、CCS	main engine
YC6C820C	600/1500	660/1548	turbocharging intercooling	39.58	4300	2930x1230x1940	SAE18	SAE0	ZC、ZY、CCS	auxiliary engine
YC6C740C	540/1000	594/1032	urbocharging intercooling	39.58	4300	2930x1230x1940	SAE18	SAE0	ZC、ZY、CCS	auxiliary engine

HC701 MARINE GEARBOX MAX.1286HP at 2400RPM

Engine Speed: 1000-2400 RPM

Ratio	Rate(hp/rpm)				Limited (rpm)
	1200	0.702	2100	2400	
1.93	0.710	0.702			1900
2.58	0.710	0.702			1900
2.90	0.710				1900
3.26	0.710	0.676	0.651		2100
3.91	0.630	0.605	0.68	0.536	2400
4.60	0.710	0.704			1900
5.17	0.710	0.704	0.613		2100
6.18	0.630	0.605		0.536	2400
7.00	0.564	0.564		0.511	2400
7.47	0.529	0.529		0.487	2400

LxWxH: 1420x1160x1430mm

Net Weight: 2000kg

Bell housing:SAE 00 0

Flange: SAW18,21

Options/Comments: Mechanical or Electrical remote control

Centre distance: 205 mm

Engine: KTA38-M...

Rated propeller thrust: 90KN

HCQ700A MARINE GEARBOX MAX.1875HP at 2500RPM

Engine Speed: 1000-2100 RPM

Ratio	1.5-2.5	2.78	2.96
Rate(hp/rpm)	0.75	0.70	0.67

LxWxH: 898x1104x1066mm

Net Weight: 900kg

Bell housing:SAE 0

Flange: SAW16,18

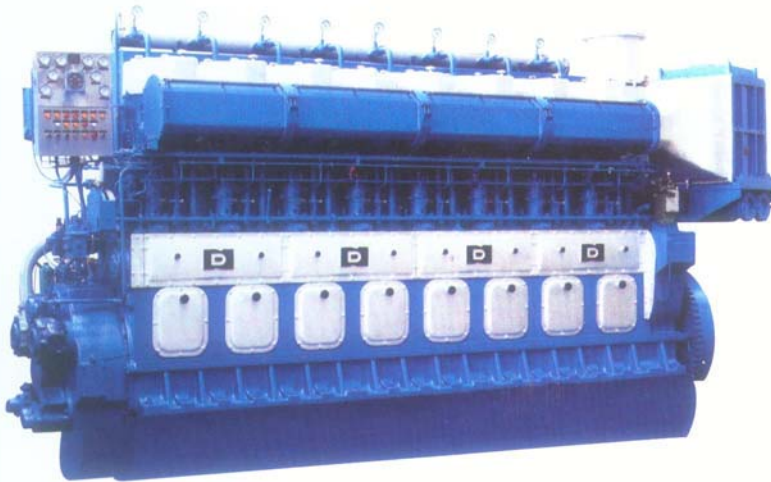
Options/Comments: Mechanical or Electrical remote operation

Centre distance: 290 mm

Engine: KTA38-M; CAT3508TA ...

Rated propeller thrust: 90KN

GN8320 Marine Engine



可匹配的齿轮箱型号 Matched Gearbox



GWC60.66 3:1
GWC66.75 3:5:1
GWC70.76 3:5:1

GN8320 型船用柴油机主要技术规格

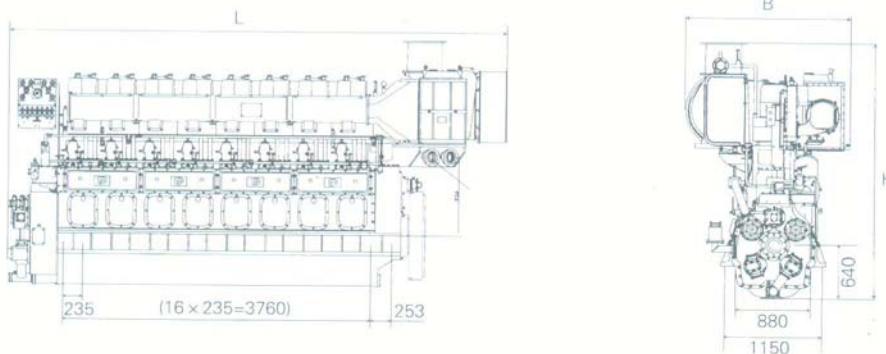
Main Technical Specifications of Series GN8320 Marine Diesel Engines

型号 Model	右机(Starboard)	GN8320ZC2B	GN8320ZC12B	GN8320ZC4B	GN8320ZC14B	GN8320ZC6B
	左机(Port)	GN8320ZC3B	GN8320ZC13B	GN8320ZC5B	GN8320ZC15B	GN8320ZC7B
型式 Type	四冲程、水冷、直列、直接喷射、增压、中冷、不可逆转 4-Stroke, Water cooling, In-line, Direct Injection, Turbocharged, Intercooling, Irreversible					
标定功率(千瓦) Rated Output(kW)	2300	2648	2795	2970	3089	
标定转速(转/分) Rated Speed(r/min)	600		630	650		
超负荷功率(千瓦) Overload Power(kW)	2750	2912.8	3074.5	3267	3397.9	

注：本资料所载的有关数据仅供参考，以我公司提供的技术文件为准。因产品改进，本资料所载产品相关数据及文字表述如有变动，恕不另行通知。

GN8320型船用柴油机外形尺寸图

Overall dimension of model GA6300 marine diesel engines



康明斯船用发动机规格 Cummins Marine Engine Specification

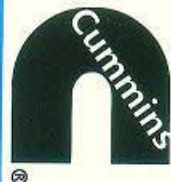
Characteristic:

Integrated building block system structural put engine contains up to 25% fewer parts than competitive engines in its class, ensure design intensity to through strict basis of test experiment ,reduce the size of parts reasonable, not only to reduce the size and weight of diesel, but also bring down the failure rate and maintenance costs. Put turbocharged/turbocharged and aftercooled as major products to improve the dynamic character and economical efficiencu.Efficient fuel supply system and air intake system put fuel and air mixed fuller, burning totally and lower discharge of pollutants.



序号 Item	型号 Model	FR	额定功率 Rated Power	额定转速 Rated Speed	最大功率 Max Power	用途 Use Of Power
1	4BTA3.9-GM47	FR92492	47KW	1500r/min	52KW	Marine Generator Set
2	6BT5.9-GM83	FR92305	83KW	1500r/min	92KW	Marine Generator Set
3	6BTA5.9-GM100	FR92068	100KW	1500r/min	110KW	Marine Generator Set
4	6BTAA5.9-GM115	FR92437	115KW	1500r/min	127KW	Marine Generator Set
5	6CT8.3-GM115	FR92221	115KW	1500r/min	127KW	Marine Generator Set
6	6CTA8.3-GM155	FR92118	155KW	1500r/min	170KW	Marine Generator Set
7	6CTA8.3-GM155(IMO)	FR92119	155KW	1500r/min	170KW	Marine Generator Set
8	6LTAA8.9-GM200(IMO)	FR92710	200KW	1500r/min	220KW	Marine Generator Set
9	4BTA3.9-GM65	FR92342	65KW	1800r/min	71KW	Marine Generator Set
10	6BT5.9-GM100	FR92068	100KW	1800r/min	110KW	Marine Generator Set
11	6BTA5.9-GM120	FR92438	120KW	1800r/min	132KW	Marine Generator Set
12	6CT8.3-GM129	FR92222	129KW	1800r/min	142KW	Marine Generator Set
13	6CTA8.3-GM175(IMO)	FR92184	175KW	1800r/min	193KW	Marine Generator Set
14	6LTAA8.9-GM215(IMO)	FR92290	215KW	1800r/min	237KW	Marine Generator Set
15	6BT5.9-M120	FR91410	90KW	2200r/min	100KW	Marine Propulsion Engine
16	6BTA5.9-M150	FR91411	110KW	2200r/min	120KW	Marine Propulsion Engine
17	6CTA8.3-M188	FR91943	138KW	2328r/min	152KW	Marine Propulsion Engine
18	6CTA8.3-M205	FR91944	151KW	2328r/min	166KW	Marine Propulsion Engine
19	6CTA8.3-M220	FR92809	164KW	1800r/min	180KW	Marine Propulsion Engine
20	6CTAA8.3-M260	FR92292	190KW	2134r/min	209KW	Marine Propulsion Engine
21	6LTAA8.9-M300	FR92926	224KW	1800r/min	245KW	Marine Propulsion Engine
22	6LTAA8.9-M315	FR92291	230KW	2134r/min	253KW	Marine Propulsion Engine

Note: All the above engine model have got the type approval certification of CCS.
Some have deserved IMO emission certification



康明斯船舶推进柴油机规格

Cummins Marine Propulsion Engine Specification

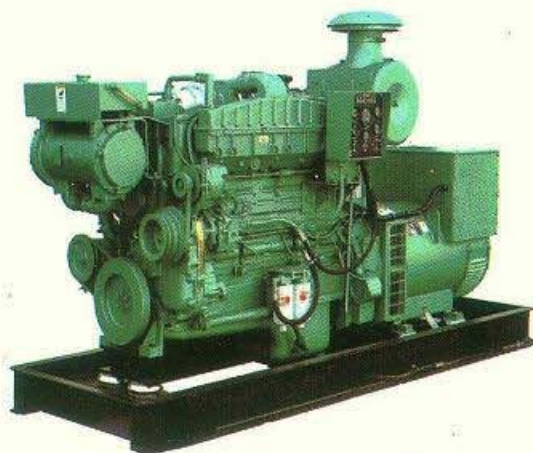
Model 型号 Unit	Cylinder No 缸数	Bore×Stroke 缸径×冲程 MM×MM	Disp 排量 L	Continuous Rating 持续功率 KW (HP) @r/min	Heavy Duty Rating 重负荷功率 KW (hp) @r/min	Medium Continuous Rating 中等持续功率 KW (HP) @r/min	Dry Weight 干质量 KG	Overall Dimension 外型尺寸 MM	Max Torque Capacity At Front Crank 扭矩 N.M	Installation Angle (Front up) 倾斜角 °	Continuous Operation At Propeller Oil Pan 横置安装角 °
NT855-M240	6	140×152	14	179(240)@1800			1385	1965×952×1538	593	15	45
NT855-M270	6	140×152	14	201(270)@1800			1385	1965×952×1538	593	15	45
NT855-M300	6	140×152	14	224(300)@1800			1385	1965×952×1538	593	15	45
NTA855-M350	6	140×152	14	261(350)@1800			1450	1965×952×1538	593	15	45
NTA855-M360	6	140×152	14			269(360)@2100	1385	1965×952×1538	593	15	45
NTA855-M400	6	140×152	14			298(400)@2100	1450	1965×952×1538	593	15	45
KT19-M425	6	159×159	19	317(425)@1800			1815	2151×966×1704	997	12	30
KTA19-M470	6	159×159	19	351(470)@1800			1906	2151×966×1704	997	12	30
KTA19-M500	6	159×159	19	373(500)@1800			1906	2151×966×1704	997	12	30
KTA19-M550	6	159×159	19			410(550)@2100	1906	2151×966×1704	997	12	30
KTA19-M600	6	159×159	19	447(600)@1800			1906	2151×966×1928	997	12	30
KTA19-M640	6	159×159	19		477(640)@1800		1906	2151×966×1928	997	12	30
KTA19-M700	6	159×159	19			522(700)@2100	1838	2151×966×1928	997	12	30
KT38-M800	V12	159×159	38	597(800)@1800			3709	2506×1355×1909	1695	8	30
KT A38-M1	V12	159×159	38	746(1000)@1800			3913	2506×1355×1909	1695	8	30
KT A38-M1	V12	159×159	38			820(1100)@1800	3913	2506×1355×1909	1695	8	30
KT A38-M2	V12	159×159	38	895(1200)@1800			3913	2506×1355×1909	1695	8	30

Rating Conditions and Model Description:

1. Fuel consumption is based upon GSBE31001-89 which is the standard fuel for engine inspection and testing. The heat value is 42700KJ/KG.
2. Power rating is based on ISO3046(SAEJ1228), condition of 100KPa, 25°C and 30% relative humidity.
3. All the above engine model have got the CCS certification and IMO emission certification.

Marine Generating Sets Specification

船用发电机组



序号 Item	型号 Model	输出功率 OUTPUT POWER KW/KVA		发电机型号 ALTERNATOR MODEL		船用发动机型号 MARINE ENGINE MODEL		备注 NOTE
		常用功率 STAND	备用功率 CONTINUOUS	MARATHON	STAMFORD	CUMMINS		
1	CXM30	30/36	33/39.6	MP-H-30-4	UCM224C	4BTA3.9-GM47		
2	CXM35	35/43.75	38.5/48		UCM224D	4BTA3.9-GM47		
3	CXM40	40/48	48/52.8	MP-H-40-4	UCM224E	4BTA3.9-GM47		
4	CXM43	43/53.75	47.3/59		UCM224F	4BTA3.9-GM47		
5	CXM50	50/62.5	55/69	MP-H-50-4	UCM224F	6BT5.9-GM83		
6	CXM65	65/81.25	71.5/89		UCM274C	6BT5.9-GM83		
7	CXM75	75/93.75	82.5/103		UCM274D	6BT5.9-GM83		
8	CXM80	80/100	88/110		UCM274D	6BTA5.9-GM100		
9	CXM90	90/108	99/118.8	MP-H-90-4	UCM274E	6CT8.3-GM115		
10	CXM100	100/125	110/137.5		UCM274E	6CT8.3-GM115		
11	CXM100E	100/125	110/137.5		UCM274E	6BTA5.9-GM115		Emergency
12	CXM120	120/144	132/158.4	MP-H-120-4	UCM274G	6CTA8.3-GM155		
13	CXM125	125/156	137.5/172		UCM274G	6CTA8.3-GM155		
14	CXM140	145/181	155/194		UCDM274J	6CTA8.3-GM155		
15	CXM160E	160/200	176/220		UCDM274J	6LTAA8.9-GM200		Emergency
16	CXM176E	176/220	194/242		UCDM274K	6LTAA8.9-GM200		
17	CXM200	200/250	220/275		HCM434D	NTA855-GM		
18	CXM250	250/312.5	275/343.75		HCM434F	NTA855-GM		
19	CXM300	300/375	330/412.5		HCM534C	KTA19-GM		
20	CXM360	360/450	396/495		HCM534D	KTA19-GM		
21	CXM400	400/500	440/550		HCM534E	KTA19-GM		
22	CXM500	500/625	550/687.5		LVM634B	KT38-GM		
23	CXM600	600/750	660/825		LVM634D	KTA38-GM		
24	CXM800	800/1000	880/1100		LVM634G	KTA38-GM		

MARINE GEARBOX SPECIFICATION 船用齿轮箱

Model	Ratio	Rate (HP/RPM)	Engine Speed	Overall Dimension L×W×H	Net Weight	Housing SAE#
06	2.52/3.05/3.5	0.006	1000-2100RPM	350×316×482MM	58Kg	
16A	2.07/2.48/2.95/3.35/3.83	0.016	1000-2100RPM	425×555×565MM	95Kg	
40A	2.07/2.68/2.96/3.65	0.04-0.031	1000-2100RPM	414×610×620MM	225Kg	
FD142	1.97-5.47	0.041-0.018	1500-2500RPM	308×520×540MM	140Kg	NO:2,3
FD170	1.97-5.88	0.053-0.037	1000-2500RPM	510×670×660MM	250Kg	NO:1,2,3
FD242	3.04-5.88	0.140-0.101	1000-2500RPM	442×744×763MM	360Kg	NO:1
135A	2.03-5.81	0.136-0.095	750-2000RPM	580×795×830MM	510Kg	NO:1
FD270A	4.05-6.82	0.020-0.120	1000-2500RPM	715×890×945MM	680Kg	NO:1
J300	2.04-4.10	0.384-0.35	750-2500RPM	785×980×1045MM	702kg	NO:0,1
JD300	4.00-7.63	0.35-0.170	750-2500RPM	785×980×1045MM	870Kg	NO:0,1
JT300	4.1-7.54	0.33-0.30	750-2300RPM	770×980×1105MM	1300Kg	NO:0,1
J400A	2.04-4.94	0.45-0.25	1000-1800RPM	713×950×890MM	820Kg	NO:0,1
JD400A	4.00-6.00	0.45-0.38	1000-1800RPM	801×1010×1066MM	1050Kg	NO:0,1
JT400A	6.11-9.47	0.45-0.333	1000-2100RPM	832×1052×1160MM	1250Kg	NO:0,1
J600	2.18-3.89	0.65-0.55	1000-1800RPM	910×1214×1126MM	1300Kg	NO:00,0
JD600	4.18-6.05	0.65-0.55	1000-1800RPM	910×1214×1271MM	1400Kg	NO:00,0
JT600A	6.06-9.35	0.60-0.38	1000-2100RPM	809×1214×1222MM	1600Kg	NO:00,0
JT600A/1	6.60-14.30	0.60-0.45	1000-2100RPM	809×1214×1222MM	1800Kg	NO:0
JT600A/2	7.43-10.95	0.676-0.676	1000-2100RPM	809×1214×1271MM	1850Kg	NO:0
J900A	1.96-4.06	0.952-0.86	750-1600RPM	1220×1081×1149MM	1800Kg	
JD900A	3.96-6.44	0.910-0.707	750-1600RPM	1250×995×1149MM	1600Kg	NO:0
JT900	4.65-9.52	1.089-0.60	1000-1800RPM	1730×1242×1530MM	2300Kg	NO:0
JT900/1	9.59-15.38	0.95-0.56	1000-1800RPM	1730×1242×1530MM	2500Kg	NO:0
JT900/2	6:1-9:1	1.38-1.15	1000-1800RPM	1730×1242×1530MM	2500Kg	
J1200A	2.56-4.45	1.261-1.261	750-1500RPM	1220×1081×1149MM	1800Kg	
JT1200	6.12-9.02	1.38-1.15	1000-1800RPM	1240×1370×1530MM	2250Kg	
MG28.30	1.9403-6.9825	1.10-0.29	400-1800RPM	800×1028×1014MM	1100Kg	
MG30.32	2.0149-6.9170	1.43-0.42	400-1800RPM	868×1101×1037MM	1315Kg	
MG32.35	1.9762-6.8848	1.86-0.53	400-1800RPM	920×1250×1330MM	1830Kg	
MG36.39	2.0121-6.9825	2.46-0.70	400-1800RPM	1060×1307×1233MM	2200Kg	
MG39.41	1.9377-7.0536	3.24-0.89	400-1600RPM	1110×1402×1298MM	2920Kg	



船用系列产品 MARINE SERIES PRODUCTS



型号 Model	适用功率 Engine Power	冷却面积 Cool Area m ²	进水口尺寸 Inflow Dia	出水口尺寸 Outflow Dia	外型尺寸 Overall Dia L×W×H	外壳材料 Shell Material
CH100	30HP	0.23	ø22	ø22	320×114×230MM	Aluminum
CH200	40HP	0.33	ø18	ø25	300×95×310MM	Aluminum
AH300	48HP	0.66	5/4"	ø50	480×147×254MM	Aluminum Stainless Steel
CH300	60-108HP	1.60	ø38	ø60	596×179×293MM	Aluminum Stainless Steel
CH400	180-240HP	2.00	ø38	ø60	716×179×306MM	Aluminum Stainless Steel
CH500	590HP	2.90	ø50	ø100	820×208×400MM	Aluminum
CH700	240-300HP	2.42	ø38	ø60	851×179×331MM	Aluminum Stainless Steel
CH900	788HP	3.90	ø50	ø80	1050×223×406MM	Aluminum Stainless Steel
PH300	788-1182HP	7.79	ø76	ø120	1100×290×580MM	Aluminum
PH400	1476-1769HP	9.33	ø76	ø150	1180×290×580MM	Aluminum
KH200-3	360HP		2" BSP(R)	ø80	670×380×210MM	Aluminum
KH300-4	480HP		2" BSP(R)	ø80	820×380×210MM	Aluminum
KH400-5	600HP		2" BSP(R)	ø80	1000×380×210MM	Aluminum
SL-200	70HP	0.62	2"	1-1/4"		Aluminum
SL-300	70-108HP	1.30	2"	1-1/2"		Aluminum
SL-400	150-240HP	1.61	2"	1-1/2"		Aluminum
SL-500	240-400HP	1.98	2"	1-1/2"		Aluminum
SL-600	290-600HP	1.91	2-3/8"	2"		Aluminum
SL-700	450-600HP	3.50	2-3/8"	2"		Aluminum
SL-830A	600-800HP	4.30	3"	2"		Aluminum
K2000	1800-2000HP	14.50	6"	4"		
K4000	2000-4000HP	29.40	6"	4"		
K450	KT450	2.55	2-1/2"	G 2"		
N350	NT350	1.83	2-1/2"	G 2"		
DE100	40-80HP	0.29	G 3/4"	Ø44.50	279×95×102MM	
DE120	80-120HP	0.314	G 3/4"	Ø44.50	365×95×102MM	
DE140	120-160HP	0.414	G 3/4"	Ø44.50	463×95×102MM	

船用操纵器 Control box



MORSE 双柄
Twin control



日式
Twin control



MORSE 单柄
Single control



韩式锌(铝)单柄
Single control



韩式锌(铝)单柄
Twin control



B 87



B 183

不锈钢海水泵 Stainless steel sea water pump



CR100 -RH
-LH



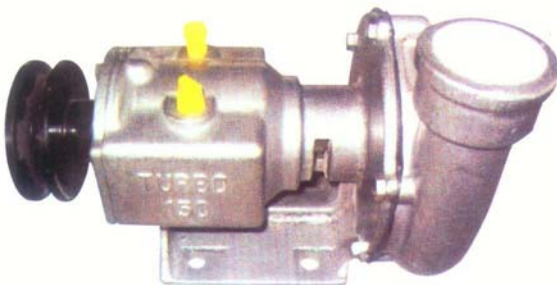
CR125 -RH
-LH



CR150 -RH
-LH



CR200 -RH
-LH



TB150 -RH
-LH



TB200 -RH
-LH

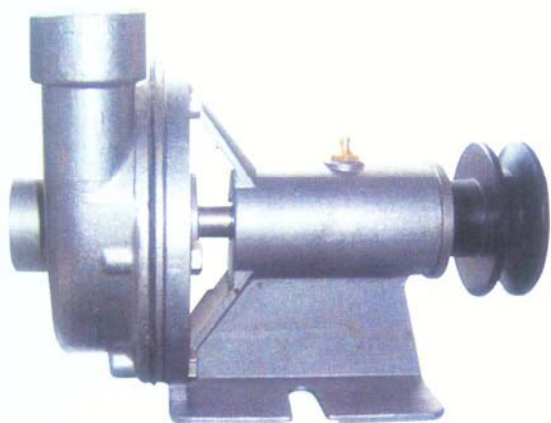
不锈钢海水泵 Stainless steel sea water pump



PC8000 $\frac{3}{4}$ " -RH
-LH



PC8000 1" -RH
-LH



PC8000 $1\frac{3}{4}$ " -RH
-LH A型



PC8000 $1\frac{1}{4}$ " -RH
-LH



PC8000 $1\frac{1}{2}$ " -RH
-LH



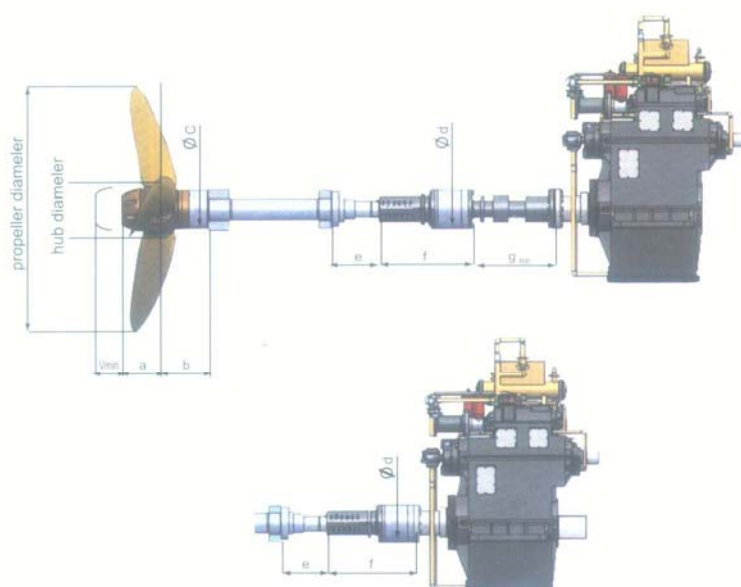
PC8000 2" -RH
-LH

ATPS: ADVANCE Turnkey Propulsion Systems:

Fuel costs are one of the major operating expenses for ship owners. High propulsive efficiency saves fuel. Ship propulsion systems can only operate at peak efficiency when optimum propulsion parameters for all system components are selected. The way to achieve this is by concentrating the responsibility for the complete propulsion system behind the prime Move in one hand. ADVANCE delivers fully integrated turn key propulsion systems with single source engineering responsibility for all design and manufacturing aspects, including 'in house' hydrodynamic design, 'in house' manufacture of all critical components and a supervised supplier base in accordance with ISO-9001. The turn key approach also avoids delivery delays and clearly defines the responsibility for the scope of supply.



Main Dimensions For ADVANCE MASSON Hubs



AM hub	AM hub Diameter	a	b	c	d	emin	f	gmin	Vmin	p/n
404	432	303	518	324	270	300	633	590	100	1.7
604	480	340	580	356	315	300	715	900	110	2.6
704	520	360	642	406	355	350	747	900	120	3.2
804	560	385	590	419	390	350	873	900	125	4.5
1004	640	460	630	466	430	400	990	780	145	6.5
1504	720	500	690	470	480	400	1112	780	165	8.4
2004	780	530	728	492	480	450	1112	1010	175	11
2504	840	574	768	600	550	500	1160	1010	190	15
3004	860	595	780	620	550	500	1245		195	19.6
4004	1020	700	1070	760	700	700	1550		230	28

FILTER



机油滤清器 Lub.Filters

降低磨损，使您的内燃机更耐用。
Reduce wear, extend in internal combustion engine life.

燃油滤清器 Fuel Filters

我们的滤清系统创立了油水分离器行业标准。
ADVANCE FILTRATION established a worldwide industry standard for fuel water separator.

空气滤清器 Air Filters

使您的内燃机获得最低的油耗和最大的动力性。
Generate max power in internal combustion engine with min oil consumption.

水过滤器(内含DCA冷却剂)

Water Filters (DCA Inside)
防锈，防冻，防沸，防止水垢形成。
Waterproof, anti-freezing, anti-boiling, and anti-liner pitting.

